



Televes®

Ellipse®

**INTELLIGENCE
TAKEN TO THE LIMIT**

ELIMINATES INTERFERENCE,
EVEN AT THE LIMITS OF THE TV BAND

Ellipse®

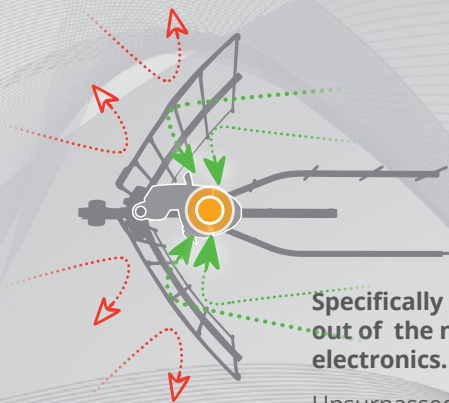
A new concept of DTT antenna that eliminates interference even at the limits of the TV band, combining a break-through design in a 100% stainless mechanical frame that houses the new generation of TForce electronics, featuring a revolutionary SAW filter.

Ellipse is an intelligent antenna that adapts automatically and in real time to the received signals. It has been designed to offer a stable, quality reception of OTA signals, optimizing the rejection of the LTE band thanks to a SAW filter that offers great selectivity.

You will be captivated by the

INNOVATIVE DESIGN,

with optimal compromise between reception quality and size



Specifically designed to get the most out of the new generation of TForce electronics.

Unsurpassed aesthetics show a meticulous design and passion for details

Curves enhance reception: the concave surface created by the reflectors focus the signal on the dipole. The convex external side maximize screening and rejection against interference.



You will be surprised by the **MECHANICS,**
COMPLETELY IMMUNE TO
CORROSION



100%
INOX

- **Manufactured with oxidation-resistant materials:** aluminium, stainless steel, and ZAMAK reinforced with an anti-corrosion treatment.
- **Extremely lightweight:** it makes installation in challenging locations easier.
- **Compact:** lower wind resistance
Reduced dimensions without sacrificing performance (21.85 x 26.97 x 32.28 in)

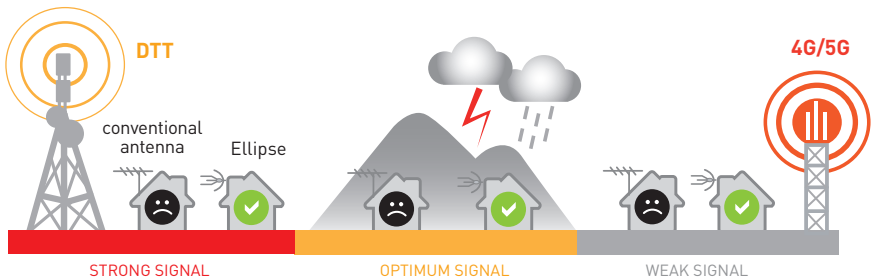
You will be reassured by the

INTELLIGENT ELECTRONICS,

that secure optimum service while rejecting,
even unexpected interference

Ellipse is hands down the best antenna for a range of DTT coverage, capable of adapting to ever-changing conditions for signal reception. Never worry again about external factors such as:

- Distance to the transmitter (either too close or too far)
- Adverse terrain or weather conditions
- Current and future LTE interference



This is possible because our market leading BOSSTech system has been re-engineered into our new generation of TForce electronics. Exclusive technology that provides functionality that is hard to match:

T·FORCE®

- **The highest dynamic range:** it allows the reception of a quality signal in a variety of situations, detecting very weak signals and avoiding overload with overly strong signals.
- **Optimal C/N:** the signal quality is always preserved thanks to a very low noise figure.
- **Optimal gain:** the best possible output level, automatically, every time.
- **The high-rejection SAW filter (Surface Acoustic Wave):** suppresses interference even at the limits of the TV band.

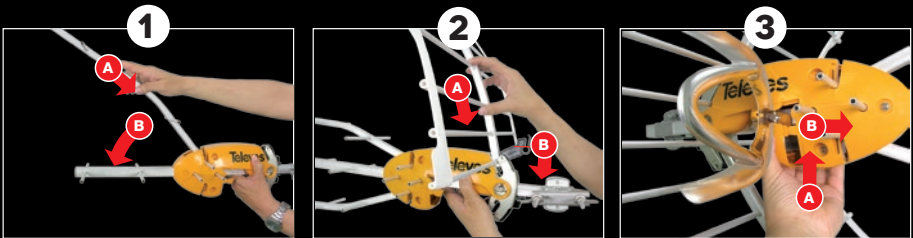
PSU included: intelligence is activated when the antenna is powered.

You will be thrilled with the **MANUFACTURING QUALITY** produced in state-of-the-art facilities

Manufactured in a fully automated production and verification line that ensures the highest level of performance guaranteed

You will experience the benefits of a seamless **ASSEMBLY PROCESS**, easy and fast

- Quick assembly in less than 30 seconds for Ellipse and 1 minute for Ellipse Mix
- No tools required
- A robust and permanent fastening system



Check out our assembly videos!

Ellipse: less than 30 seconds

http://en.televes.com/ellipse_video

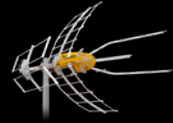
Ellipse MIX: less than 1 minute

http://us.televes.com/ellipse_video



Ellipse®

Choose your model:



SPECIFICATIONS

		148981 ELLIPSE	148881 Ellipse MIX	
WORKING BAND	MHz	470 - 698 (CH14 - CH51)	174 - 216 (CH7 - CH13)	470 - 698 (CH14 - CH15)
MODE		INTELLIGENT (BOSS ON)		
GAIN	dBi	40	36,5	40
OUTPUT LEVEL		Auto		
NOISE FIGURE	dB	2,5 (typ)		
SIGNAL LEVEL OF USE (RECOMMENDED)	dBmV	<15		
POWERING VOLTAGE	Vdc	12-24		
CONSUMPTION	mA	40 (max)		
BEAMWIDTH	°	30		
F/B RATIO	dB	>20		

ellipse.televes.com

Televes®



Televes Corporation®