

ECONO-COOLER

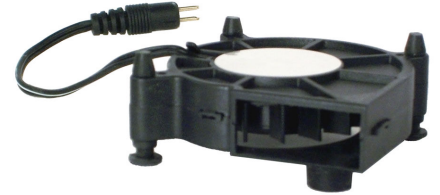
CP-EC



COOL COMPONENTS
INCORPORATED

www.coolcomponents.com

This is a very economical and basic unit but full of functionality. It is intended to fill a need for systems where the budget is tight and simplicity is the key. But it should also be said that economical does not mean cheap - this is a high quality blower specially manufactured to quietly and efficiently cool and last a long time. For a more aesthetically pleasing unit with similar functionality, use the Single Fan Cooling Unit (CP-SF). This unit has various uses but most commonly it is simply placed on a component to provide direct cooling. With the mounting holes, it can also be fastened to a cabinet or using an optional gasket, can be adhered to the side of a component if space truly is non-existent.



FEATURES

- Quiet & Efficient Operation
- Effectively Circulates Air Around Components
- Quick and Easy Installation
- Sleek and Low Profile Size Allows for Placement in Tight Spaces
- Uses Variable Voltage Power Supply to Adjust Fan Speed. This allows the unit to be run more aggressively if installed in an enclosed cabinet or closet, or silently if necessary.
- Compatible with the Temperature Controllers (TC- BSC, TC-ALT & TC-AC)

Category
1

GENERAL SPECIFICATIONS

Dimensions:	2 3/8" x 2 3/8" x H 5/8"
Construction:	Black Plastic Housing
Cooling System:	1 Brushless Levitation Blower (Est. 50,000hr)
Air Flow:	4 CFM (Max)
Noise:	Silent - 20 dba (Max)

POWER SPECIFICATIONS

Multiple Units Can Be Powered with a Single PS-300 Power Supply

Connection:	2-Pin FastWire Power System (Ensure proper polarity)
Voltage:	5 to 12V DC
Current:	40 milliamps at 12V DC